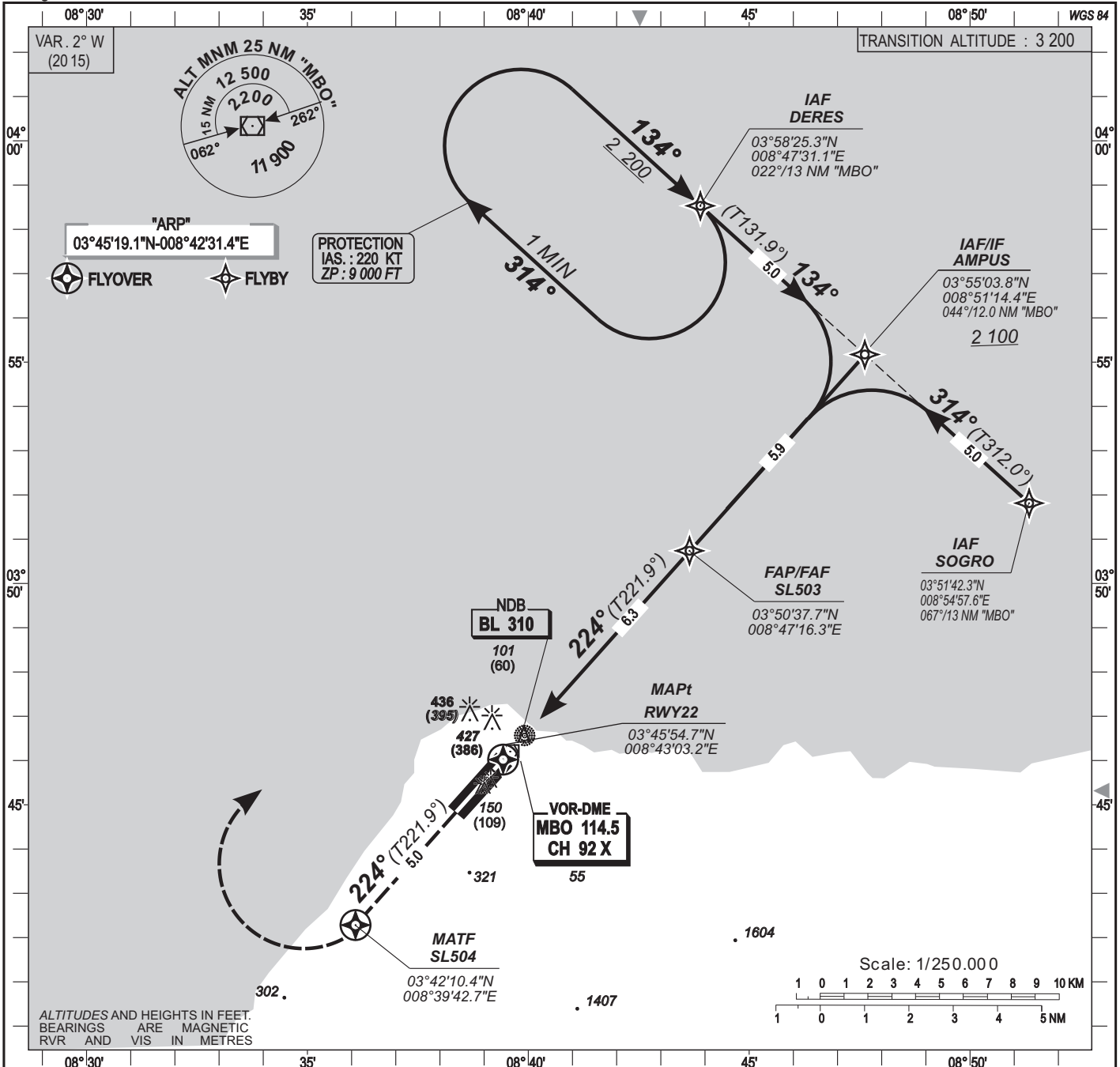
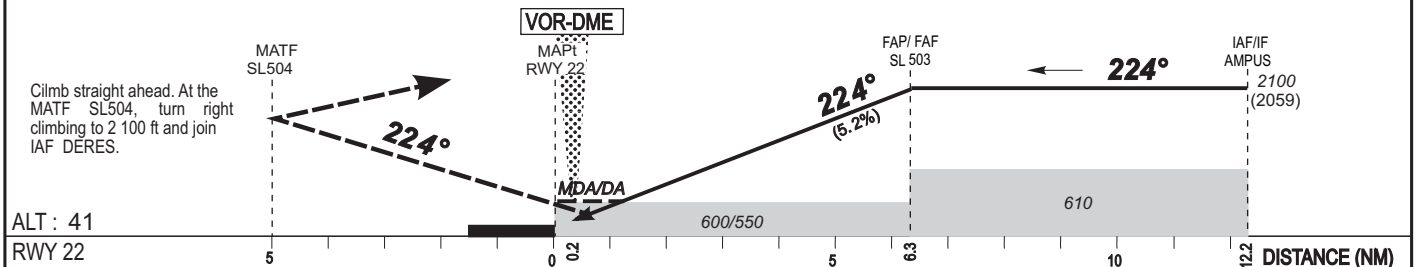


HEIGHTS RELATED TO THR 22 ELEVATION



Distance to THR22 (NM)	FAP/FAF	6	5	4	3	2
Altitude (ft)	2 100	2000	1685	1365	1045	730



CAT	LNAV				LNAV/VNAV				CIRCLING				RVR for take-off		
	OCA (OCH)	MDA MDH	RVR(1)	RVR(2)	OCA (OCH)	DA DH	RVR(1)	RVR(2)	OCA (OCH)	MDA MDH	VH	CAT A - B - C : 400 CAT D : 400			
A	593 (552)	600 (560)	1400	1500	550 (509)	550 (510)	1000	1500	731 (655)	740 (660)	1500	Timing FAP-FAF /THR 6.3 NM			
B	593 (552)	600 (560)	1500	1500	550 (509)	550 (510)	1200	1500	731 (655)	740 (660)	1600	KT	MIN SEC	KT	MIN SEC
C	593 (552)	600 (560)	1600	2000	550 (509)	550 (510)	1200	2000	830 (754)	830 (760)	2400	90	4 Min 12	140	2 Min 42
D	593 (552)	600 (560)	1800	2000	550 (509)	550 (510)	1600	2000	830 (754)	830 (760)	3600	100	3 Min 47	150	2 Min 31
												110	3 Min 27	160	2 Min 22
												120	3 Min 09	170	2 Min 14
												130	2 Min 55	180	2 Min 06

Notes: (1) With approach lights - (2) Without approach lights  
(3) At the North-West of the field - Daytime only.  
- Climbing sector after take-off: between radials 224° and 313° BIS.  
- Minimum temperature: 15°C

PROCEDURE TO BE USED ACCORDING TO AIC NR 02/A/2002 DAKAR - 21 MARCH 2002

AMDT 12/18 : NORMALIZATION